

CANGARU Alternatives Fund (Class D2)

-0.20%

Absolute Return Fund of Funds

Fund Profile

Strategy and Objective

Long term capital growth objective by investing in a diversified portfolio of funds with various alternative strategies that aim to have a low correlation with traditional asset classes, especially during bear markets. The strategies of the underlying funds are predominantly arbitrage strategies.

General Information

Name	CANGARU Alternatives Fund (CAF)
Type	Fund of Funds Absolute Return
Fund Manager	Privium Fund Management B.V.
Legal Structure	Fund for Joint Account (FGR)
Fund Domicile	The Netherlands

Specific Information*

Inception	27 April 2018
NAV Class D2	EUR 991.20
ISIN Class D2	NL0012818272
Fund Total Assets	EUR 23.06 Million

Investment Solution

Liquidity Schedule²

Frequency / Currency	Monthly (No Lock-Up) / EUR
Subscription Notice	10 Business Days
Redemption Notice	20 Business Days

Fee Schedule³

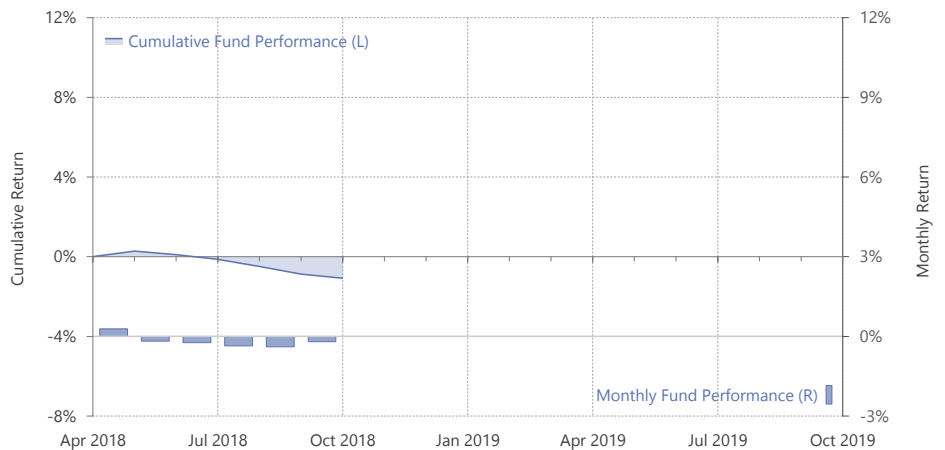
Management Fee (D2)	0.20% (Annually)
Performance Fee (D2)	Not Applicable

Investment Committee

Portfolio Manager	Bob Hagemans
Investment Oversight	Mark Baak
Investment Oversight	Robert-Jan van Hoorn

Performance*

Net Fund Performance (Class D2)¹



Year	Jan	Feb	Mar	Apr	May	Jun	Jul	Aug	Sep	Oct	Nov	Dec	YTD
2018	-	-	-	-	+0.28	-0.18	-0.24	-0.35	-0.39	-0.20			-1.08

Management Summary*

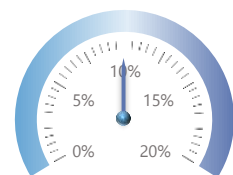
Monthly Net Return (-0.20%)



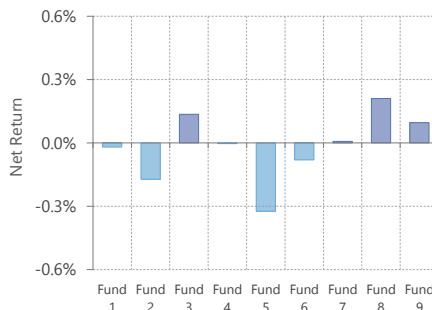
Number of Funds (9)



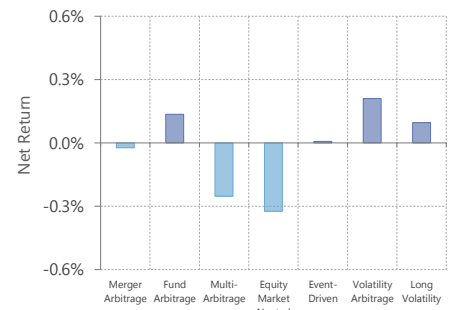
Average Position Size (10.0%)⁴



Weighted Fund Return⁵



Weighted Strategy Return⁵



* Source: CANGARU. Where applicable the information provided is as of 31 October 2018.

¹ Returns net of all applicable fees for the CANGARU Alternatives Fund and including all applicable fees of the underlying funds.

² Dealing Date is the First Business Day of the Month for both Subscriptions and Redemptions and no Fees are applicable.

³ The Management Fee is charged on a monthly basis.

⁴ The Average Position Size is defined as the average weight for all positions taken over the total assets including cash.

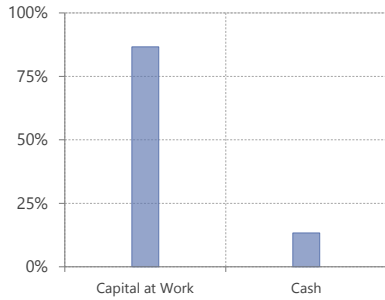
⁵ Calculations based on Net Return of the Underlying Funds, hence excluding all applicable fees for the CANGARU Alternatives Fund. In this way the weighted returns are not biased by any fees enabling clean performance judgement of the Underlying Funds and Strategies (before costs).

CANGARU Alternatives Fund (Class D2)

-0.20%

Absolute Return Fund of Funds

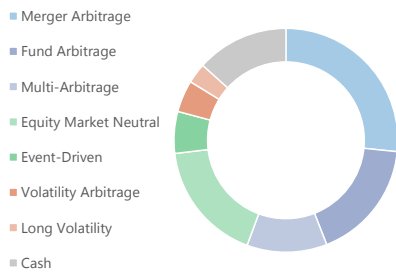
Capital Allocation*



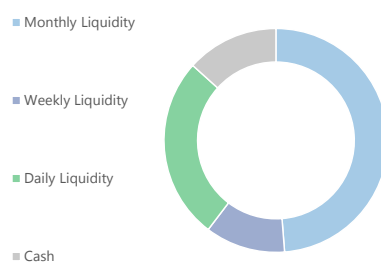
Manager Location



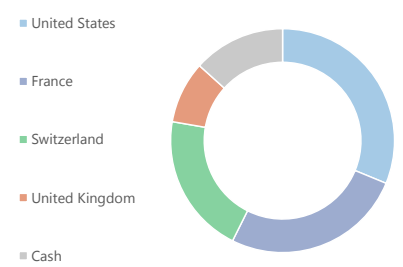
Strategy Allocation*



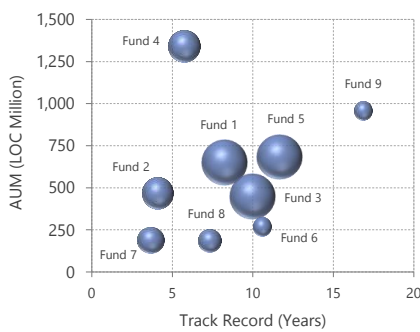
Liquidity Breakdown*, 1



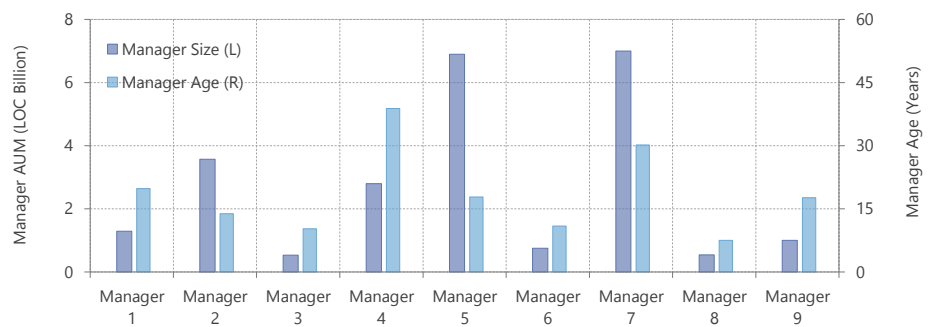
Manager Location Breakdown*



Fund Size and Track Record**, 2



Fund Manager Size and Age**, 3



Additional Information

Service Providers

Legal Owner	Stichting Juridisch Eigendom CAF
Administrator	Circle Investment Support Services B.V.
Depository	Darwin Depository Services B.V.
Auditor	Ernst & Young Nederland B.V.
Custodian	Circle Investment Support Services B.V.
Legal and Tax Advisor	Van Campen Liem

Important Information

Privium Fund Management B.V. (Privium) is authorized and regulated by the Dutch Authority for the Financial Markets (www.afm.nl) as an Alternative Investment Fund Manager (AIFM). Both Privium Fund Management and the Fund are registered in the register of the AFM. This communication is neither an offer to sell nor a solicitation to invest.

Past performance is not indicative of future results. The value of investments and any income generated may go down as well as up and is not guaranteed.

For more information, please refer to the Key Investor Information Document or 'KIID' and the Prospectus on the website of Privium (www.priviumfund.com).

* Source: CANGARU. Allocation and Breakdown information is based on the total assets value before any fees as of 31 October 2018.

** Sources: CANGARU in combination with information provided by the Underlying Managers where the values are to the best of our knowledge and mostly (potentially delayed) estimates.

¹ The breakdown in this graph is based on the Liquidity defined as the trading frequency of the Underlying Funds without taking into account any Notice Periods.

² In this graph the size of the bubbles represents the weight of the Underlying Fund in the Portfolio as of 31 October 2018 before any Fees applicable to the CANGARU Alternatives Fund.

³ The Manager AUM (Size) information in this graph is in Local Currency (LOC) and should be interpreted as rough estimates.